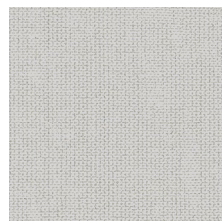


THREADSCAPE

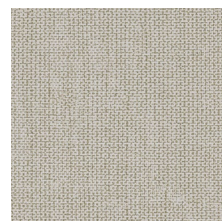
COLOR BODY PORCELAIN

floridatile

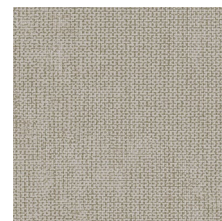
COLORS



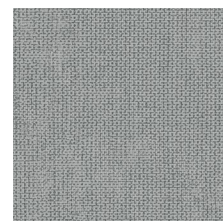
THR10
Loom



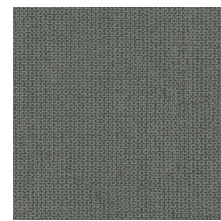
THR20
Sand



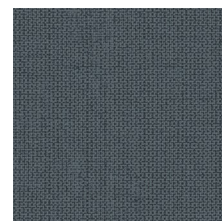
THR30
Drift



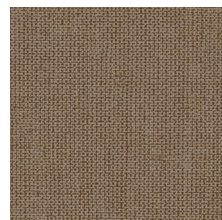
THR40
Twill



THR50
Moss



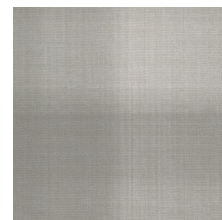
THR60
Denim



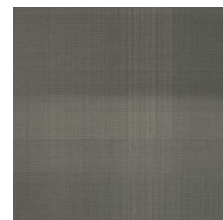
THR70
Suede



THR80D*
Ashford



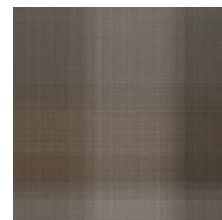
THR90D*
Harrington



THR100D*
Westbridge



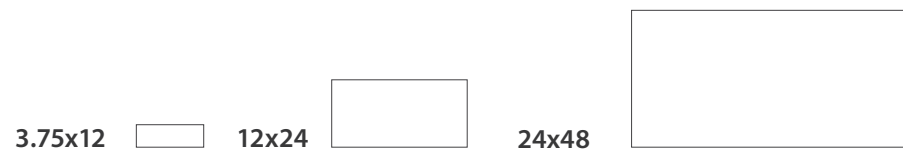
THR110D*
Crosby



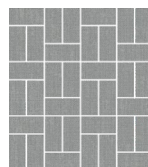
THR120*
Bexley

*Only available in 24x48

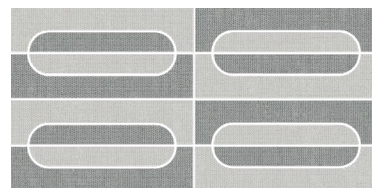
FORMATS



MOSAICS



THR40/M1.5x3OBW
Twill Offset Basketweave
(available in all colors)



THR14/M4x8SOV*
Loom Twill Semi-Oval

***COMBINATIONS**
Loom Twill mix
Sand Drift mix
Moss Sand mix
Denim Twill mix
Suede Drift mix

TRIMS

3x24 Bullnose



THR10 12x24 Loom, THR70 24x48 Suede & THR120 24x48 Bexley

THREADSCAPE

COLOR BODY PORCELAIN

Porcelain Technical Data Properties (Floor)	Results ¹
ANSI® A326.3²	Interior, Wet Plus (IW+)
Surface Hardness	7 Mohs
Break Strength	≥ 400 lbf. avg.
Water Absorption	≤ 0.5% ³
Intended Use⁴	Residential, Light Commercial & Heavy Commercial

¹ Values are offered in good faith as being accurate and typical of normal production. Due to the natural variation of raw materials and manufacturing processes, the values of the purchased product for any particular installation may vary.

² For more information, visit floridatile.com/productuseclassifications.

³ Average production value.

⁴ Please visit www.floridatile.com/intended-use for further details.

Field Tile Nominal Size (in) ¹	Metric (cm)	Pcs./Sq Ft ²	Thickness ³	Edge
3.75x12	9.5x30	.5	9 mm	Rectified
12x24	30x60	.5	9 mm	Rectified
24x48	60x120	.13	9 mm	Rectified

Mosaic	SKU	Nominal Sheet Size (in) ¹	Metric (cm)	Thickness ³
Offset Basketweave	M1.5x3OBW	12x12	30x30	9 mm
Semi Oval Mosaic	M4x9SOV	11x11	28x28	9 mm

Trim	Shape	SKU	Nominal Size (in) ¹	Metric (cm)
Bullnose		P43N9	3x24	7.5x60

¹ These values may vary from lot to lot.

² These values are based on actual sizes including the grout joint.

³ May not apply to textured surfaces or tiles with uneven back patterns such as mesh mounted mosaics.

Typical Uses

Threadscape color body porcelain floor and wall tile is appropriate for most residential and commercial wall, countertop, backsplash, and floor applications.

Notice: Not all flooring products are suitable for wet areas, specialized applications, or commercial use. Please refer to the American National Standard Specifications for Ceramic Tile (ANSI® A137.1) for ceramic, stone, and glass installation for specific usage and installation information.

This Florida Tile product will contribute to USGBC LEED® points and the ANSI® approved NAHB® Green Building Points.


Notes

Color, texture, and finish variations may occur due to the nature of the product.


Color reproductions in this printed piece may vary from actual tile colors. Final selection should be made from actual tile samples.

Country of origin and other product features and characteristics are subject to change due to manufacturing efficiencies and other factors. See retailer or product packaging to verify country of origin and other product characteristics.

Color Variation

 **V2 Slight Variation**
(10, 20, 30, 40, 50, 60, 70)

Color Variation

 **V3 Moderate Variation**
(80D, 90D, 100D, 110D, 120D)

THREADSCAPE

MERCHANDISING PREVIEW

Literature

Back Loose Labels

Front Loose Labels

10x6 Labels

Collection Cards

- Neutrals
- Accents
- Pattern

DDBs

- Neutrals
- Accents
- Pattern

Half DDBs

- Semi Oval Loom Twill Mix
- Semi Oval Sand Drift Mix
- Semi Oval Moss Sand Mix
- Semi Oval Denim Twill Mix
- Semi Oval Suede Drift Mix
- Offset Basketweave Loom & Sand
- Offset Basketweave Drift & Twill
- Offset Basketweave Moss, Denim & Suede

8”x16” Mosaic Spinner Cards

4x4 Sample Chips

- Loom Matte
- Sand Matte
- Drift Matte
- Twill Matte
- Moss Matte
- Denim Matte
- Suede Matte
- Ashford Matte
- Harrington Matte
- Westbridge Matte
- Crosby Matte
- Bexley Matte

