



CIRCLES



by Division 9 Collaborative

CIRCLES

We started with a blank porcelain panel and then developed a selection of artistic renderings that comprise the Bespoke collection. These are all produced on 5mm porcelain ceramic panels @ 39" wide x 118" long. Simple and timeless the circles roll into each other in dramatic fashion changing at the mid point into another color, it is a play on the ever changing kaleidoscope concept and the half circles almost collide and works superbly on a large scale.

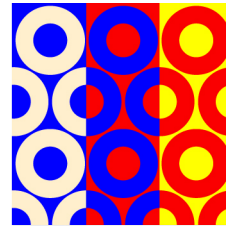


Material: Porcelain veneer panel
Size: 39"x118"
Color: White porcelain ceramic background
with applied graphics
Finish: Matte
Thickness: 5mm nominal
Application: Walls only

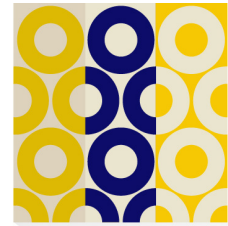
Suggested Grout:
STARLIKE - BIANCO ASSOLUTO EVO 100



COMIC BOOK



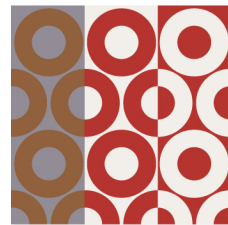
BANANA



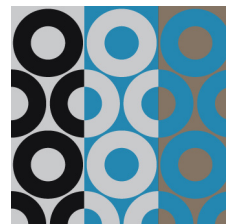
PURPLE HARVEST



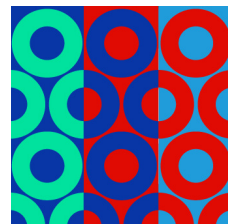
CAMPBELLS'



JACKIE



M.J.





D9C Showroom, Boston, MA

